

küng

Simply. Relax.

Nido Outdoor modular sauna



wellness | swiss made

Outdoor relaxation for health and wellbeing has a long history dating back to Native American sweat lodges and the Roman thermal baths. An outdoor sauna on your patio blends this ancient form of relaxation with state-of-the-art materials and maximum comfort. Because, alongside plants, lounging areas, firepits and water features, wellness zones are increasingly finding their place in our outdoor spaces.

The sauna integrates perfectly into the surroundings

Nido is an architectural showstopper, offering warmth, privacy and the opportunity to completely immerse yourself in nature. The cabin can be positioned almost anywhere outdoors: next to the pool, on a roof terrace or out in the middle of the landscape. The modular outdoor sauna is available in two sizes and offers plenty of flexibility for your new extended living space whilst still remaining extremely costeffective.

The modular design allows the sauna to be expanded with an anteroom to house a changing area or shower. The open variant enables you to fully immerse yourself in nature, while the closed variant offers additional protection and privacy. With a wealth of options for climate, materials and fittings, the Nido fits perfectly into your home environment and adapts to your needs. The one element that is the same in every design, however, is the craftsmanship and Swiss quality produced by our wellness factory on Lake Zurich.

Soothing views

Large panoramic windows provide breath-taking views out over your natural surroundings with every sauna visit, creating a seamless transition between the wellness zone and the landscape. Apart from foundations, no construction is required to install the Nido at all. Delivered in one piece, it can be assembled incredibly quickly, ready for your first taste of that wellbeing experience.





Basic design

- ▶ Wall elements as a frame structure with heat insulation and moisture barrier
- ▶ Outer cladding with pre-greyed spruce planks, visibly mounted
- ▶ Insulated glass panoramic window
- ▶ Lockable doors made from 8 mm clear safety glass
- ▶ Stainless steel door handle
- ▶ Cabin with grooved panelling in a choice of: polar pine | aspen | alder
- ▶ Bench made from solid aspen or alder to match the chosen internal cladding
- ▶ Microdur floor, slate or pebble look
- ▶ Backrest with indirect RGBW LED lighting
- ▶ Electric heater to create a Finnish sauna climate
- ▶ User-friendly control

All models also available mirrored

Options

- ▶ Additional panoramic window or frameless glass front
- ▶ Outer cladding with spruce or larch invisibly mounted, spruce painted, solid core panels in 14 colours or with ceramic panels
- ▶ Combined heater for the bio sauna
- ▶ Heater guard
- ▶ Bluetooth speaker
- ▶ Additional backrest with indirect LED lighting
- ▶ Accessory set
- ▶ Addition of anteroom with wardrobe or shower
- ▶ Anteroom with corner glazing
- ▶ Lock cylinder on the door lock
- ▶ Door or corner glazing with satinised glass



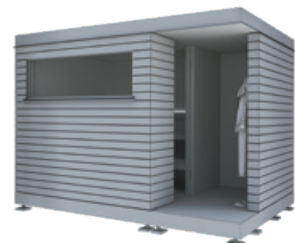
Nido S



Nido S with anteroom



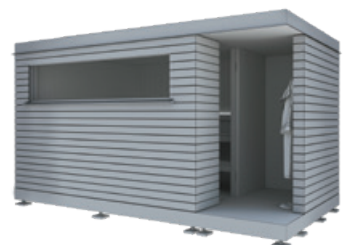
Nido M



Nido M with anteroom

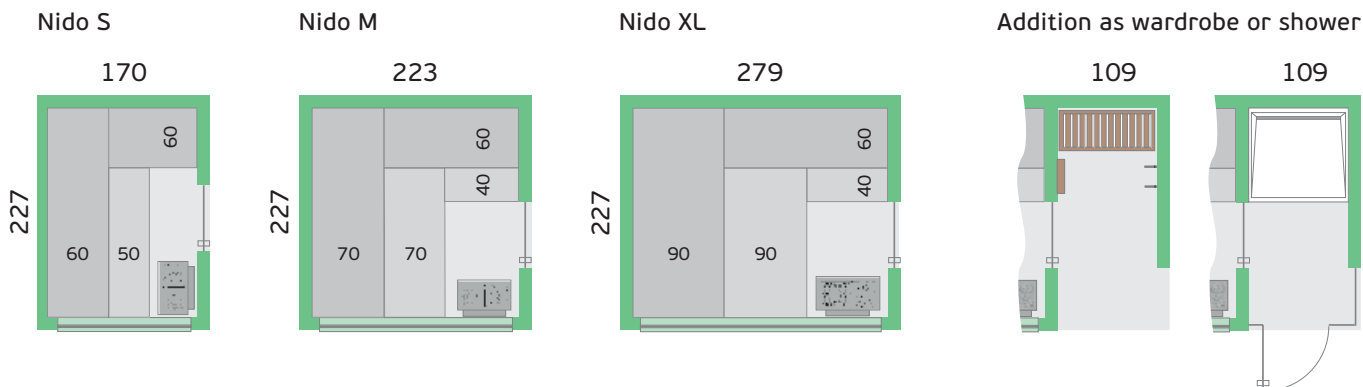


Nido XL



Nido XL with anteroom

Layouts



Interior height 193 / exterior height 206

All dimensions in cm

The unmistakable Nido features – the simple design and selection of fine woods for the interior – add a beautiful touch of refined finesse. Straight lines and large spaces offer plenty of opportunity to customise. A selection of wood types, glass, easy-care façade panels and large-format ceramic panels are available for the materialisation. The traditional spruce cladding offers a stunning contrast to the contemporary, minimalistic architectural design of the planks and mitred corners.

A Küng BIOSA® heater expands your options for using the cabin, and you can choose between a gentler bio sauna or traditional Finnish-style sauna bath. The indirect LED coloured lighting under the benches and backrests creates an atmospheric ambience for relaxing moments out in the open.

Nido at a glance

- ▶ Fully customisable
- ▶ Modular concept for short delivery lead times
- ▶ High-quality Swiss manufacturing

